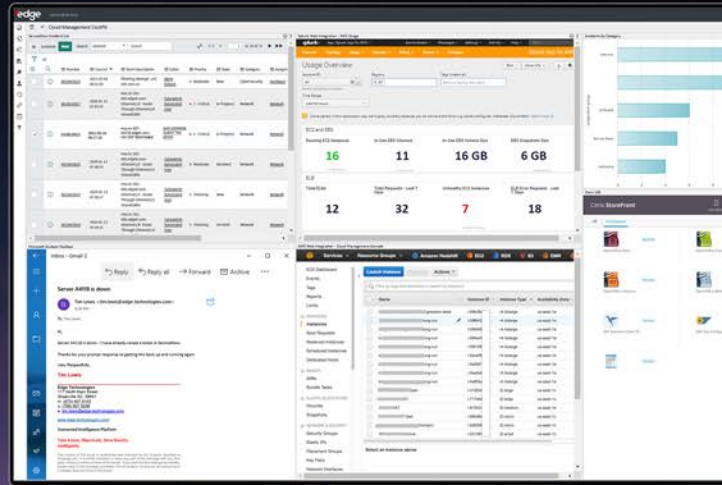




The Industry's Only

Single Point of Control Platform

Automated Single Sign-On (SSO) to Entire Toolsets & Applications - Patented Web Layer Integration Delivering the World's Only Interface Convergence Experience



Challenges

No matter what division, group, line of business, or team you are apart of, one thing is always consistent - technology is required to get the job done. Whether you are resolving an issue, completing a transaction, or ensuring the safety of a human being, more than one system or application is involved in the process.

Having a lack of technology is not a challenge for most business leaders. However, one that revolves around the people using the technology might be more difficult - how can business leaders provide a better experience to those using deployed technology and to those it affects?

Leading organizations do not need another . . .

- ▲ Monitoring Tool
- ▲ Ticketing Tool
- ▲ Business Intelligence Tool
- ▲ Analytics Tool
- ▲ Machine Learning Tool
- ▲ Artificial Intelligence Tool
- ▲ Workload Automation Tool
- ▲ Data Visualization Tool
- ▲ Reporting Tool
- ▲ RPA Tool
- ▲ And More . . .

What Business Leaders Say About Edge

" I view Edge as a complete solution that allows for seamless convergence of interfaces. All the functionality and tools we talk about, like AI/ML or business intelligence - there are vendors who operate in these arenas, and there are multiple vendors in each of them. In the sea of vendors, Edge is the only one that has zero competition and stands alone in its own category. No one else in the market today does interface convergence - I have looked and the closest thing I could find is Liferay - but it is not a proxy solution and cannot manipulate existing UIs like Edge can. "

- Sr. Managing Director, Worlds Largest Consulting Firm

What Does Interface Convergence Mean?

Interface Convergence is having the ability to automatically access multiple applications with a single set of log in credentials. It means the solution has the power to seamlessly display the UI of existing toolsets and applications in a single browser window. With this, the exchange of data between the integrated applications happens faster and user behavior becomes more efficient.

Why Does it Matter?

From user experience to the impact it has on the customer, Interface Convergence impacts everything. It even helps lower maintenance fees paid to existing vendors by reducing license usage and eliminating redundancy. It creates a vendor-neutral front end for toolsets, so as they age or are replaced, users do not experience any changes, lowering training and change management costs significantly. All things considered, it lets businesses do much more, with a lot less.

Interface Convergence - Real World Results

Edge has worked closely with business and technology leaders in multiple industries worldwide to develop and deliver patented and core capabilities that address challenges associated with M&A activity.

Follow Edge on Social Media

- www.linkedin.com/company/edgeti
- [@edgeSuite](https://twitter.com/edgeSuite)
- www.edgeti.com

A highly secure, intelligent platform servicing multiple capabilities across the M&A process.